

CHARGING STATION

COUNTERTOP CHARGING STATION



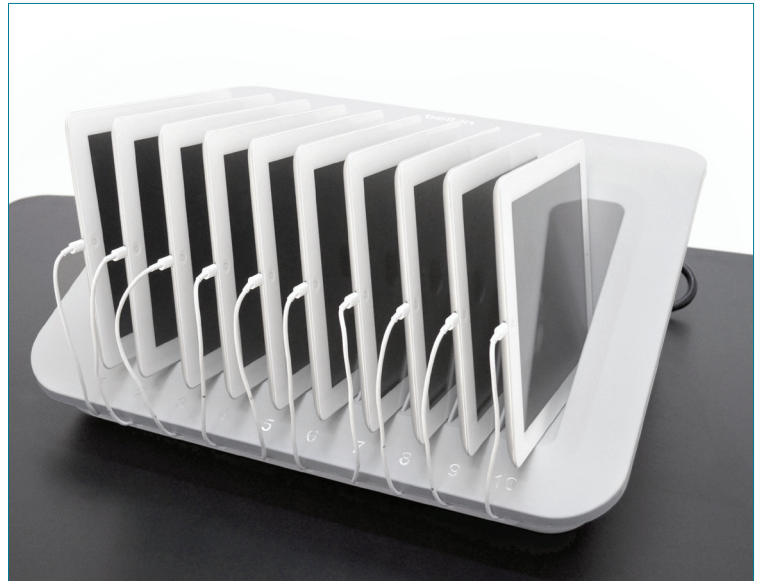
This convenient store and charge station by Belkin™ charges up to 10 devices in large bays. Its cable management conceals, organizes and protects cords underneath the tray and positions the connector right at the front of each bay. The station's space-saving footprint makes it perfect for tabletop or countertop dwelling.

Top Four Reasons You'll Love It:

- **CAPACITY**—holds 10 devices
- **CONCEALED CABLE MANAGEMENT**
- **SMALL FOOTPRINT**
- **LOVES ALL DEVICES** — mix and match tablets, e-readers, and hand-helds

The Basics:

- Large bays (1.25" w x 7.25" d) hold devices of different sizes, even with large cases.
- Simple cable routing slots position the cord just below the power inlet on the device.
- Concealed cable area below organizes and protects cords.
- Ten-outlet power bar located in the back comes with surge protection and reset button.
- Drop-ship to any location in continental US.
- One-year warranty.



Countertop Charging Station
Part # TABMD10



Cables are positioned right to the front of the dock so they're easy to connect and charge.



Inside the dock, route cords through individual chambers where tension holds them in place and channels them to the power receptacles in back.



Ten receptacles at the back of the dock are spaced to accommodate large power adapters easily.



The 10-unit dock measures just 8" w x 14" d x 7" h. Through-holes in the base allow for hard mounting to countertop or shelf.

How do you keep up with the mobile device phenomena? It's overwhelming!

The good news is that we're pretty much up to date and we love to share our experience. Even if you are looking at a company other than Anthro, that's OK! Give us a call at **800.325.3841**. We'll validate your plans, raise red flags, or just offer you support!

800.325.3841
anthro.com/tablet



ANI-1414_0ct14